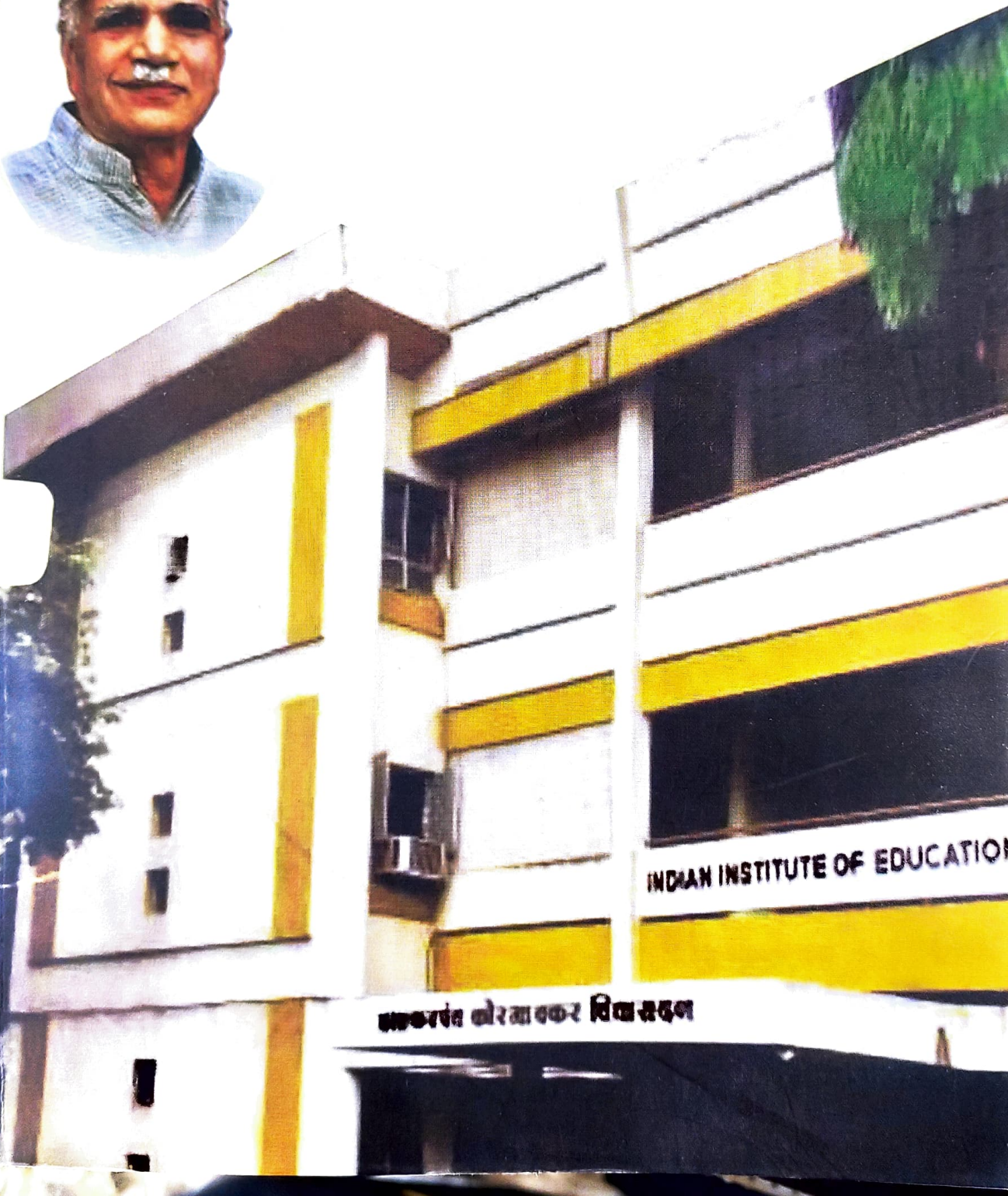
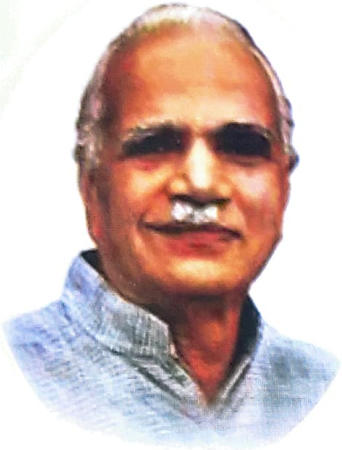


UGC CARE LISTED PERIODICAL
ISSN 2278-6864

शिक्षण आणि समाज Education and Society

Multidisciplinary Special Issue
September 2022
Part - II



47. A Study of Earnings spending and Savings of Industrial Women Workers in Satara District - Miss Saroj Bhanudas Kirtikudav, Dr. P. B. Patil	37	6
48. Health IT: Research in General Management of Health Services through Information Technology - Prof. Asif. S. Modi	38	6
49. Impact of Interventions of Krishi Vigyan Kendra on Knowledge Level of Soybean Cultivators in Satara District of Maharashtra - Pawar Gaurav Gautam, Wavare Anilkumar Krishnarao, Babar Mahesh Sampatrao	38	6
50. A Study of Impact of Online Recruitment on IT Companies - Dr. Ramdas Lad, Dr. Pallavi Kulkarni	39	6
51. A Study of Statistical Tools for Data Analysis in Social Science Research - Dr. S. H. Ambawade	41	6
52. Importance of Research in India and Research Spending - Dr. Rita Chandarana	41	6
53. Ethical Issues and Plagiarism in Research : A Step towards Quality Research - Dr. Kishor Lipare, Dr. Sudhir Borate	42	
54. Impact of Demonetization on Financial Performance of Selected Public Sector Banks in India - Miss. Asha Barikara, Dr. Mubarak	43	
55. Financial and Management Problems in Poultry Farming in India: A Review - Mr. Adinath. S. Kamble, Dr. M. A. Koli	44	
56. Analytical Study of Regional Rural Banks in Maharashtra from 2015 to 2022 - Dr. Deepak Powdel	45	
57. A Study of Financial Statement Analysis of Loknete Hanmantrao Patil Milk Processing Limited, Vita, Maharashtra - Dr. Shreya Patil	45	
58. An Analytical Study of Emotional Intelligence of Leaders in the Organizations - Dr. Leena Modi	46	
59. A Study of Bank Accounts Holders of Women in Scheduled Commercial Banks in India - Miss. Madhuri Parasharam Deshmukh	47	
60. Science Curriculum for Life-Long Learning and Value Development -Anita Pisote, Dr. Rajendra Gaikwad	48	
61. A Study on Evaluation of Educational Management System and Its Application - Hamid Albalushi, Pouria Mallahi	48	

Ethical Issues and Plagiarism in Research : A Step towards Quality Research

Dr. Kishor Lipare¹

(M.Com. SFT, M.Phil. M.B.A.,
G.D.C.&A., Ph.D.)

HOD, Commerce

Waghire College, Saswad,
Tal. Purandar, Pune

Dr. Sudhir Borate²

(M.Com. G.D.C.&A. SFT, M.B.A. Ph.D.)

Assistant Professor

Prof. Ramkrishna More College,
Akurdi, Pune

Abstract:

Research ethics is generally evolved as an idea in all the scientific research. Research in the social sciences presents an alternate arrangement of issues than those in medical research. The scientific research endeavor is based on an establishment of trust. There are numerous ethical issues to be taken into serious consideration for research. Sociologists should know about having the obligation to make sure about the genuine consent and interests of each one of those associated with the research. They should not misuse any of the information discovered, and there should be a certain moral responsibility maintained towards the participants. In addition to that Plagiarism is most considerable issue in research. Plagiarism is introducing and utilizing another's distributed or unpublished work, including theories, ideas, information, source material, strategies or discoveries, including charts and pictures, as one's own, without suitable referencing and without authorization when consent is required. For quality research ethical issues and plagiarism are the most serious issues which every researcher should take into account. Efforts should be done to follow ethical issues in research and eliminate or reduce plagiarism to the maximum extent. This is required for quality research.

Keywords: Research, Ethical Issues, Plagiarism

Introduction and Concept of Ethical Issues:

“Research ethics provides guidelines for the responsible conduct of research. Research ethics involves the application of fundamental ethical principles to a variety of topics involving scientific research.”

Researchers believe that the outcomes detailed by others are substantial. Society believes that the consequences of research mirror a genuine endeavor by researchers to depict the world precisely and without predisposition. In any case, this trust will bear just if mainstream researchers give it to epitomizing and sending the qualities related with moral logical lead. There are numerous ethical issues to be taken into serious consideration for research. Sociologists should know about having the obligation to make sure about the genuine consent and interests of